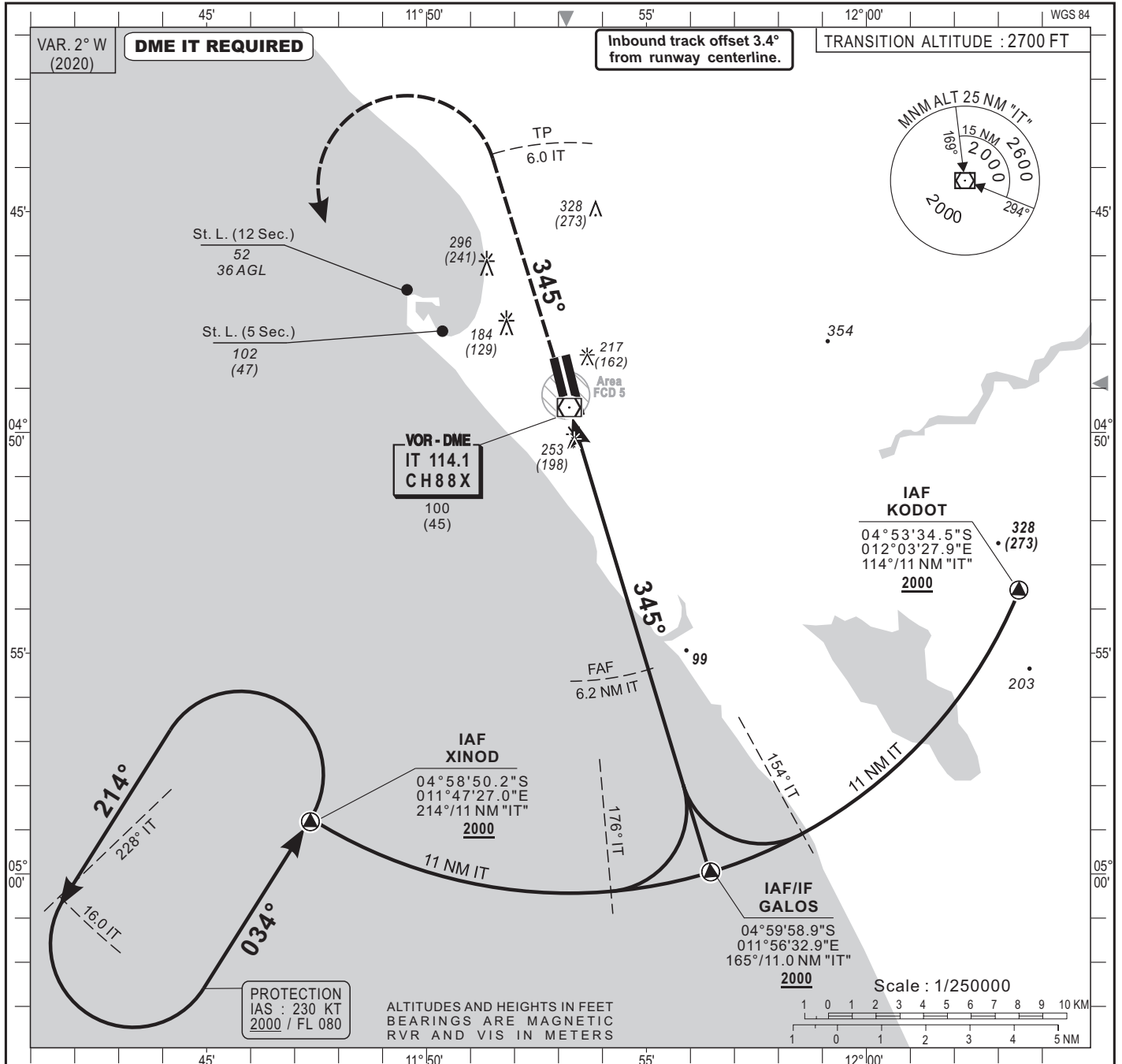
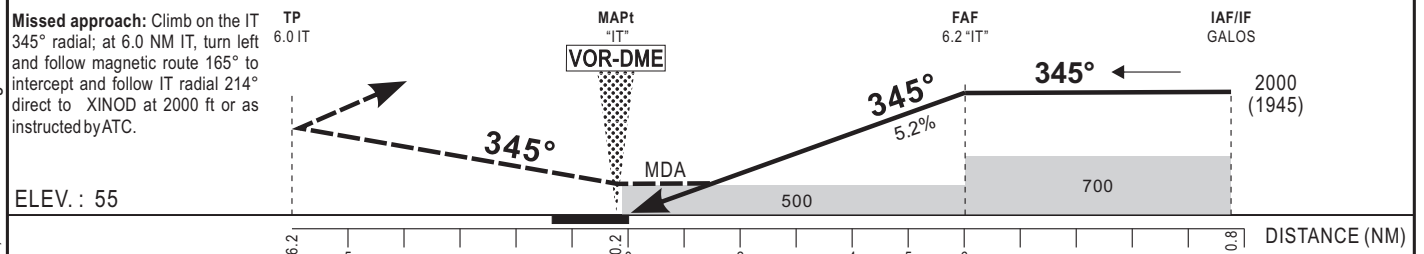


HEIGHTS RELATED TO AERODROME ELEVATION



Distance to IT (NM)	FAF	8	7	6	5	4	3	2
Altitude (ft)	2000			1950	1640	1320	1000	680

Notes : Inbound track offset 3.4° from runway centerline.



CAT	VOR-DME				CIRCLING (*)				RVR for take-off: CAT A - B-C : 400 Cat D : 400
	OCA (OCH)	MDA	MDH	RVR	OCA (OCH)	MDA	MDH	VIS	
A	499 (444)	500 (450)	1500		528 (473)	530 (480)	1500		Timing FAF-MAPt 6.0 NM KT MIN SEC KT MIN SEC
B	499 (444)	500 (450)	1500		590 (535)	590 (540)	1600	100 3 Min 36 150 2 Min 24	
C	499 (444)	500 (450)	2000		820 (765)	820 (770)	2400	110 3 Min 16 160 2 Min 15	
D	499 (444)	500 (450)	2000		820 (765)	820 (770)	3600	120 3 Min 00 170 2 Min 07 130 2 Min 46 180 2 Min 00	

Notes : - (*) OCH and MDH AAL - Daytime only.
- Climbing sector after take-off from RWY35: Between radials 268° "IT" and 173° "IT".

CORRECTIONS: Magnetic variation, VOR altitude/height.